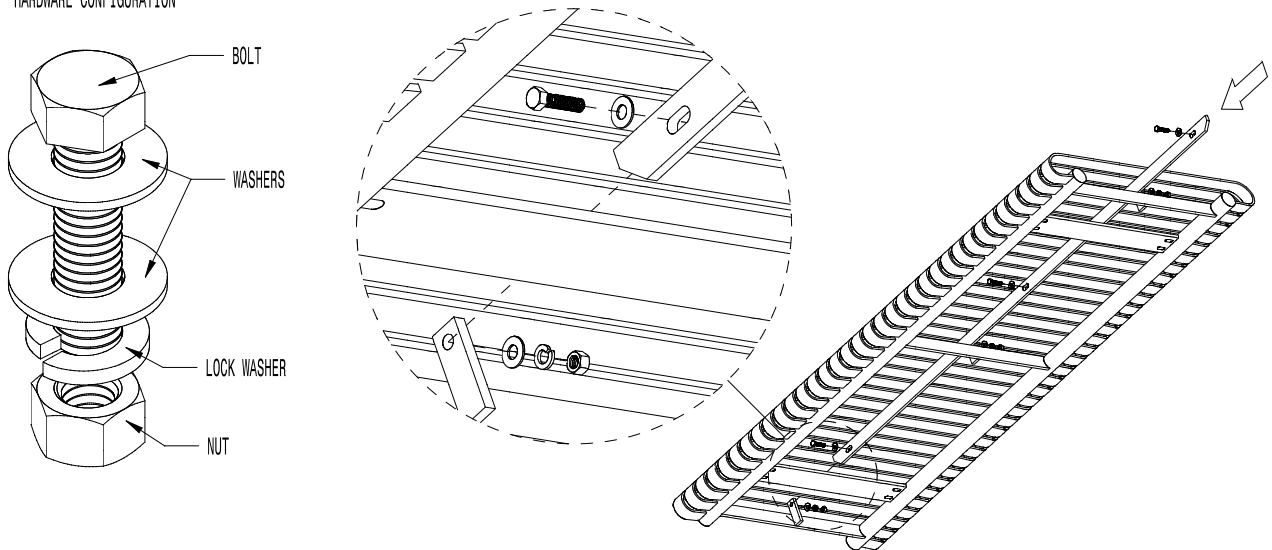


1 - REMOVE ALL PARTS FROM THEIR BOXES AND BAGS. PLACE ON TOWELS OR A SOFT SURFACE TO PREVENT SCRATCHING THE FINISH.

2 - INSERT CENTER BRACE INTO TABLE TOP. ATTACH WITH PROVIDED HARDWARE. HAND TIGHTEN ALL HARDWARE. **DO NOT FULLY TIGHTEN**

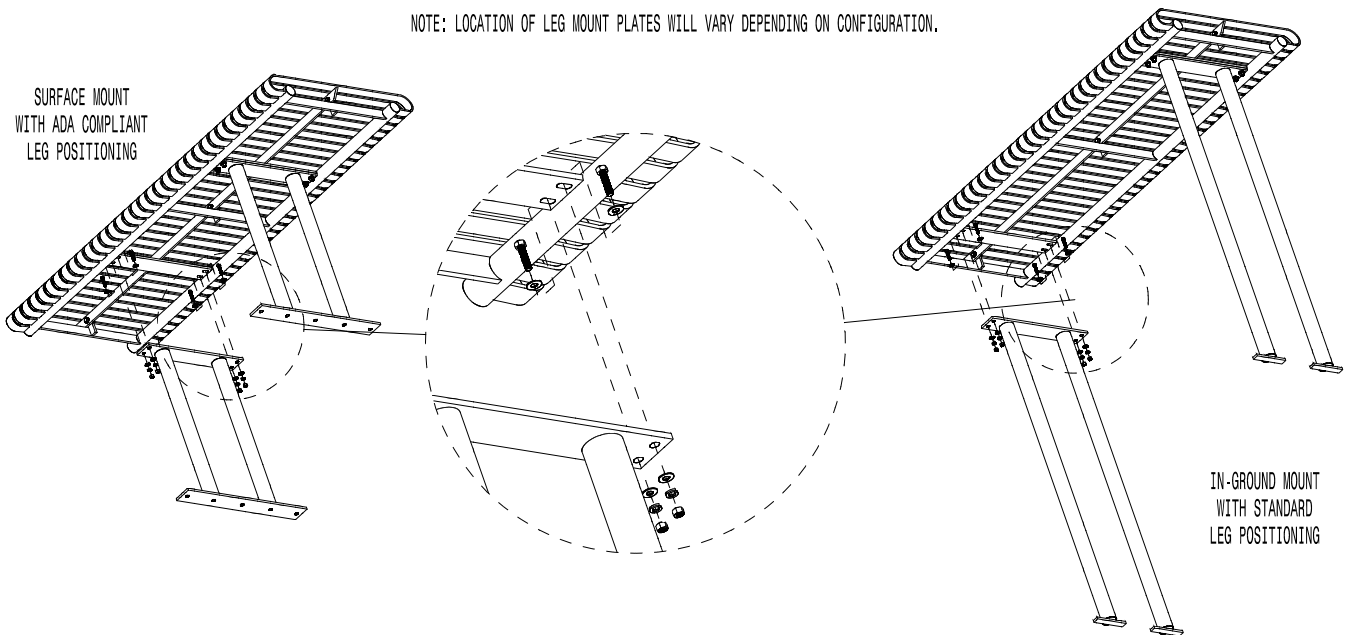
HARDWARE CONFIGURATION



3 - USING THE PROVIDED HARDWARE, ATTACH ONE LEG TO THE TABLE TOP. HAND TIGHTEN ALL HARDWARE. **DO NOT FULLY TIGHTEN**

4 - ATTACH THE REMAINING LEG. HAND TIGHTEN ALL HARDWARE. **DO NOT FULLY TIGHTEN**

NOTE: LOCATION OF LEG MOUNT PLATES WILL VARY DEPENDING ON CONFIGURATION.

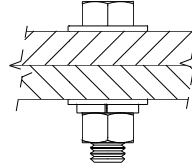
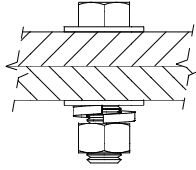


**FRST-6**  
 STEELSITES™

STEEL SLAT BENCH  
 SHOWN: GENERAL ASSEMBLY INSTRUCTIONS  
 STANDARD 6-FOOT LENGTH

5 - ONCE THE TABLE IS FULLY ASSEMBLED, MAKE SURE EVERYTHING IS PROPERLY SPACED AND ALIGNED. TOOL TIGHTEN ALL HARDWARE. BOLTS SHOULD BE TIGHTENED UNTIL LOCK WASHERS COMPRESS (AS SHOWN).

BOLT & FASTENER  
BEFORE TOOL TIGHTENING

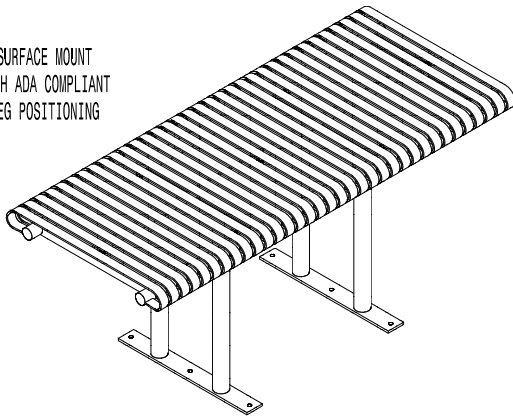


BOLT & FASTENER  
AFTER TOOL TIGHTENING

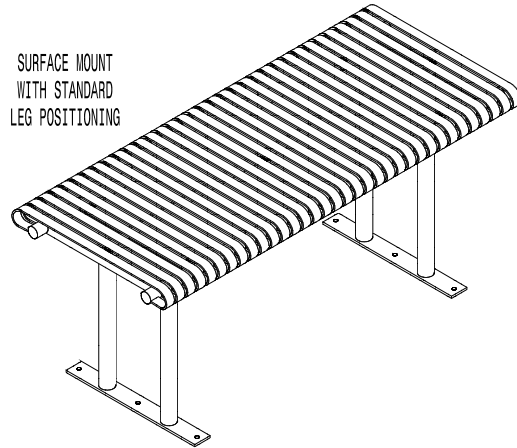
**DO NOT OVER TIGHTEN.**

**FINAL PRODUCT**

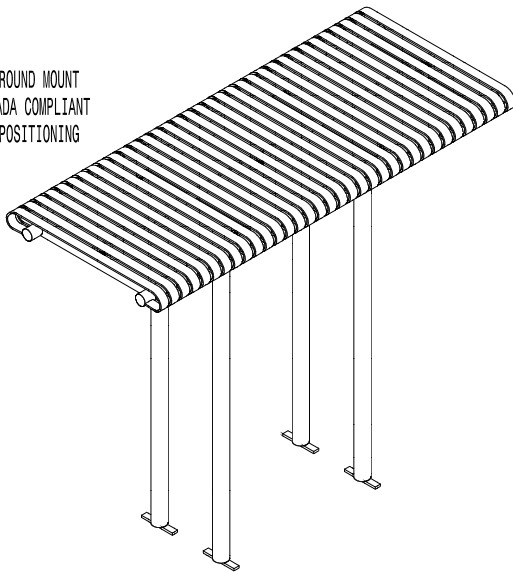
SURFACE MOUNT  
WITH ADA COMPLIANT  
LEG POSITIONING



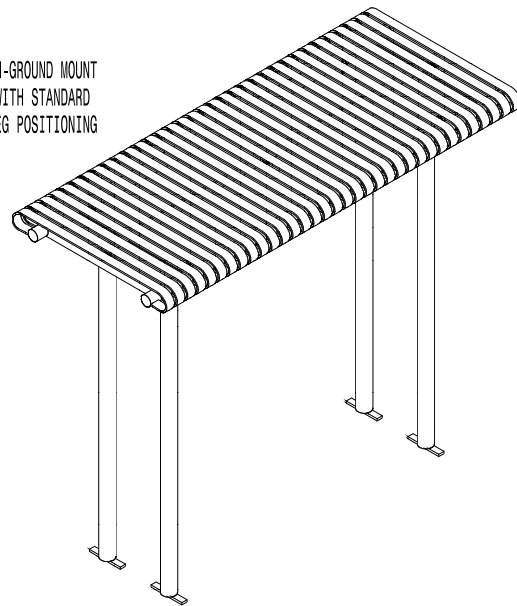
SURFACE MOUNT  
WITH STANDARD  
LEG POSITIONING



IN-GROUND MOUNT  
WITH ADA COMPLIANT  
LEG POSITIONING



IN-GROUND MOUNT  
WITH STANDARD  
LEG POSITIONING



STEEL SLAT BENCH  
 SHOWN: GENERAL ASSEMBLY INSTRUCTIONS  
 STANDARD 6-FOOT LENGTH